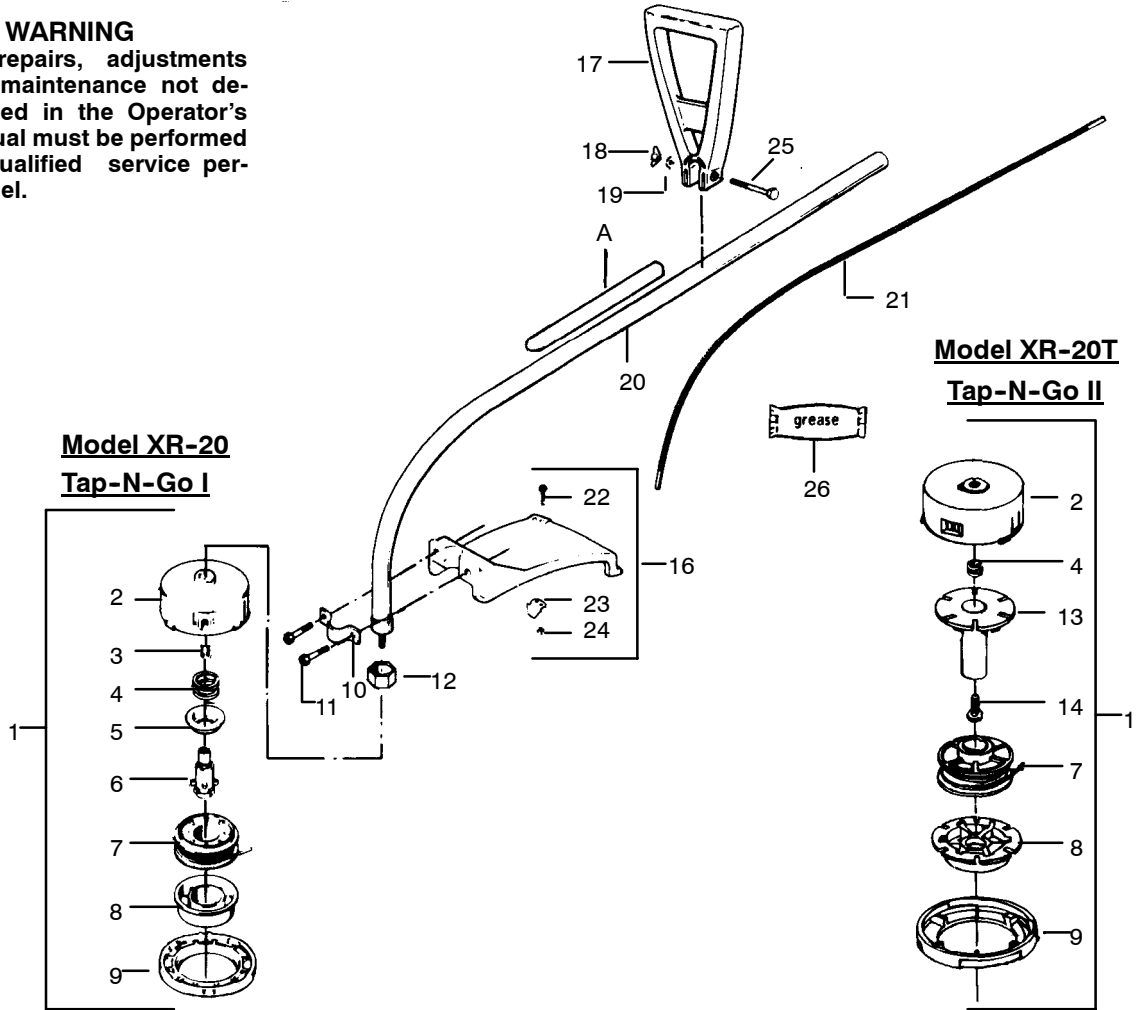
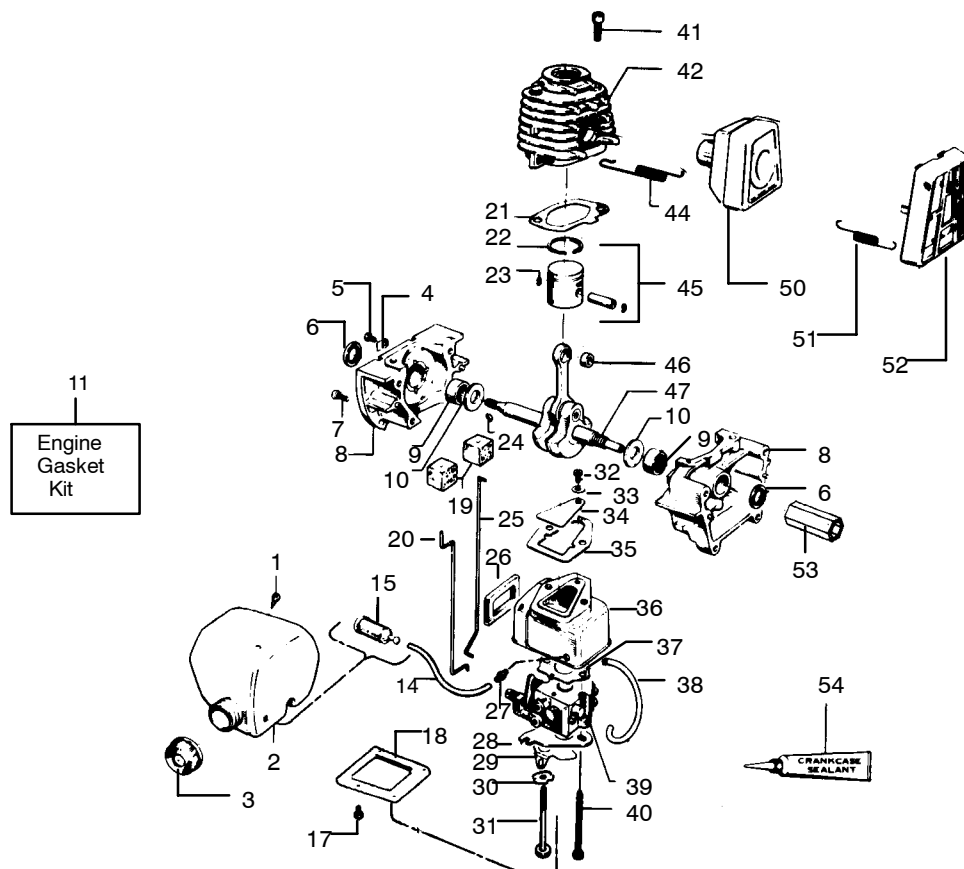


⚠ WARNING
All repairs, adjustments and maintenance not described in the Operator's Manual must be performed by qualified service personnel.

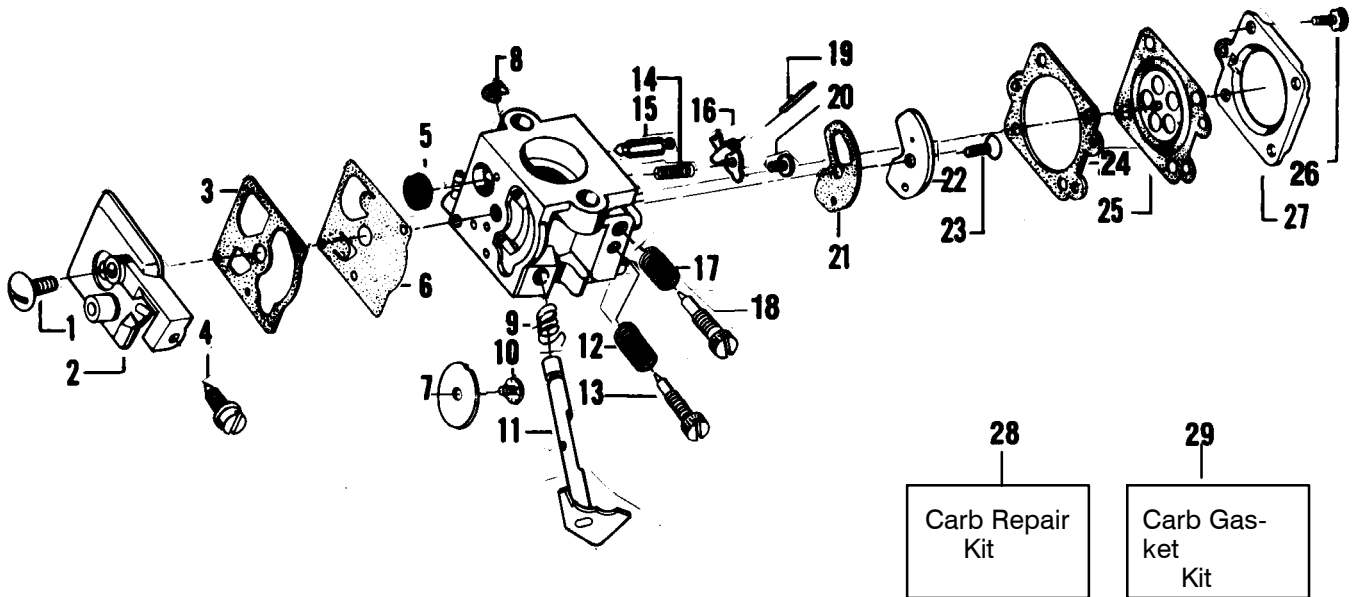


KEY NO.	PART NO.	DESCRIPTION	KEY NO.	PART NO.	DESCRIPTION
1	952-701604	Cutting Head Ass'y. See Service Ref. 5	16	-	Shield Kit Ass'y (Incl. #11,22,23 & 24) XR-20- See Service Ref. 1
2	-	Hub W/Line Saver		★★★★★ 530-069249	XR-20T
	530-093896	XR-20	17	530-010618	Assist Handle
	530-094562	XR-20T	18	530-091373	Wing Nut
3	530-093898	Line Saver-XR-20 Only	19	530-092062	Washer
4	-	Spring	20	-	Drive Shaft Ass'y.
	530-092067	XR-20		530-093943	XR-20-T 1 & 3
	530-094525	XR-20T		530-094436	XR-20-T 2; XR-20T-T 1
5	530-092068	Adaptor Spring-XR-20 Only	21	530-093935	Flex Shaft Ass'y.
6	530-093897	Drive Gear-XR-20 Only	22	530-015337	Screw
7	-	Spool w/Line	23	-	Line Limiter
	952-701523	XR-20		530-093853	XR-20
	952-701606	XR-20T		530-094570	XR-20T
8	-	Release Button	24	530-015653	Nut
	530-093387	XR-20	25	530-015737	Screw
	530-094522	XR-20T	26	530-030102	Shaft Lubrication
9	-	Cover	Decals		
	530-092133	XR-20	A	530-029159	Safety Label Decal
	530-094521	XR-20T			
10	530-093653	Shield Bracket	Not Shown		
11	-	Screw			
	★★★★★	XR-20- See Service Ref. 1			
	530-092243	XR-20T			Operator's Manual
12	530-093716	Dust Cup		530-066928	XR-20
13	530-094523	Spool Post-XR-20T Only		530-067064	XR-20T
14	530-015542	Screw-XR-20T Only			



KEY NO..	PART NO.	DESCRIPTION	KEY NO..	PART NO.	DESCRIPTION
1	530-026119	Check Valve Duck Bill	28	530-026237	Choke Wire Guide Plate
2	530-010776	Fuel Tank Ass'y.	29	530-024558	Choke Shutter
3	530-010729	Fuel Cap Ass'y. (Incl. "O" Ring)	30	530-015254	Wave Washer
4	530-024651	Choke Wire Clamp	31	530-015404	Screw
5	530-015004	Screw	32	530-015241	Screw
6	† 530-019059	Crankcase Seal	33	530-023367	Washer
7	530-015369	Screw	34	530-024438	Reed Valve
8	530-010757	Crankcase Ass'y. (Incl. #6,7, & 9)	35	† 530-019108	Gasket
9	530-032029	Crankcase Bearing	36	530-024409	Carburetor Housing
10	530-015351	Washer	37	† 530-019157	Carburetor Gasket
11	530-069219	Engine Gasket Kit (Indicates Contents)	38	530-069238	Line Kit
14	530-069216	Fuel Line-XR-20-Type 1 & 2	39	530-035183	Carburetor (See Page 4 for Ass'y.)
	530-069247	Line Kit-XR-20-Type 3;XR-20T-T1	40	530-015379	Screw
15	-	Fuel Pick-UP Ass'y.	41	530-015239	Screw
	530-091878	XR-20-T 1 & 2	42	530-012244	Cylinder
	530-010897	XR-20-T 3; XR-20-T 1	44	530-024903	Muffler Detachment Spring
17	530-015235	Screw	45	530-010753	Piston Kit (Incl. 22, 23 & Pin)
18	530-026029	Carburetor Case Cover	46	530-032057	Wrist Pin Bearing
19	530-023373	Choke Wire Throttle Boot	47	530-026418	Crankshaft & Rod Ass'y.
20	† 530-026236	Choke Wire	50	-	Muffler Ass'y.
21	530-019111	Cylinder Gasket		★★★★★	XR-20-See Service Ref 4
22	† 530-026413	Piston Ring		530-069243	XR-20T
23	530-015162	Wrist Pin Retainer	51	530-024932	Muffler Guard Spring
24	530-015126	Flywheel Key	52	530-024855	Muffler Guard
25	530-024902	Throttle Wire	53	530-093925	Drive Adaptor
26	530-019105	Carburetor Case Seal	54	530-030054	Crankcase Sealant
27	† -	Fuel Line Fitting			
	530-025472	XR-20-T1 & 2			
	530-026981	XR-20-T3; XR-20T-T1			

CARBURETOR ASSEMBLY #530-035183



KEY NO.	PART NO.	DESCRIPTION	KEY NO.	PART NO.	DESCRIPTION
1	530-035017	Pump Cover Screw	19	+ 530-035028	Metering Lever Pin
2	530-035191	Pump Cover Ass'y. (Incl. #4)	20	530-035016	Metering Lever Pin Screw
3	* + 530-035164	Pump Gasket	21	* + 530-035147	Circuit Plate Gasket
4	530-035156	Idle Adjustment Screw	22	530-035042	Circuit Plate
5	+ 530-035178	Inlet Screen	23	+ 530-035137	Circuit Plate Screw
6	* + 530-035166	Diaphragm Pump	24	* + 539-035151	Metering Diaphragm Gasket
7	530-035133	Throttle Valve	25	* + 530-035014	Metering Diaphragm Ass'y.
8	530-035007	Throttle Shaft Clip	26	530-035153	Metering Cover & Throttle Shaft Clip Ass'y. Screw
9	530-035138	Throttle Return Spring	27	530-035149	Metering Diaphragm Cover
10	530-035015	Throttle Valve Screw	28	530-035185	Carb Kwik Repair Kit (+In- dicates Contents)
11	530-035132	Shaft Ass'y. - Throttle	29	530-035186	Carb. Gasket/Diaphragm Kit (*Indicates Contents)
12	530-035023	Idle Needle Spring			
13	530-035141	Idle Needle			
14	530-035139	Metering Lever Spring			
15	530-035106	Inlet Needle Valve			
16	530-035031	Metering Lever			
17	530-035036	Hi Speed Needle Spring			
18	530-035142	Hi Speed Needle			

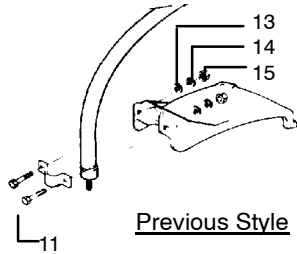
*Contents of Carb. Gasket/Diaphragm Kit
+Contents of Carb. Kwik Repair Kit

PARTS LIST NO. 530-066419-1/31/90		WEED EATER® PARTS LIST	LINE TRIMMER MODEL: XR-20 & XR-20T
Page No. 5	Replaces 66419-4/18/88		

SERVICE REFERENCES

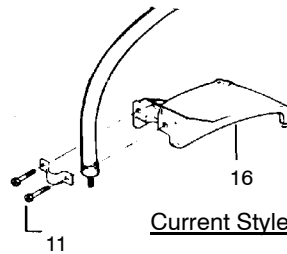
1. KIT SHIELD ASSEMBLY - PAGE 1.

To replace shield fasteners, refer to drawings below. Identify the shield with which your unit is equipped and order accordingly. To replace a shield, use Kit #69213. The current style shield will retrofit the previous style by using the fasteners in the kit.



Previous Style

<u>Key No.</u>	<u>Part No.</u>	<u>Description</u>
11	530-625567	Bolt
13	530-015209	Washer
14	530-001642	Lockwasher
15	530-015515	Nut



Current Style

<u>Key No.</u>	<u>Part No.</u>	<u>Description</u>
11	530-092243	Screw
16	530-069249	Shield Kit Ass'y. (Incl. #11,22,23 & 24 from page 1)

2. FAN HOUSING, AIR BAFFLE AND PULLEY SCREW - PAGE 2.

Different types of screws are required for the plastic fan housing and for the metal fan housing.

To service screws in the plastic fan housing use:

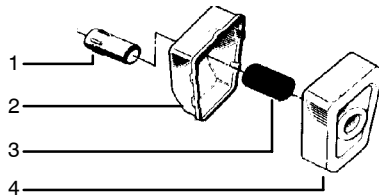
<u>Key No.</u>	<u>Part No.</u>	<u>Description</u>
13	-	Screw
8	530-015706	Type 2 (Plastic Shroud)
1	530-015583	Type 1 (Metal Shroud)
96	530-015582	Screw
2	530-015544	Screw
2	530-015563	Screw
	530-015479	Screw

To service screws in the metal fan housing use:

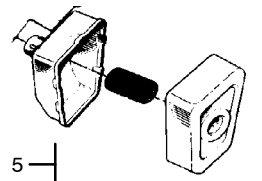
<u>Part No.</u>	<u>Description</u>
-	Screw
530-015706	Type 2 (Plastic Shroud)
530-015376	Type 1 (Metal Shroud)
530-015168	Screw
530-015373	Screw
530-015305	Screw
530-015036	Screw

4. MUFFLER ASSEMBLY - PAGE 3.

To replace your muffler note the drawings below and order accordingly. If your unit has a separate diffuser, order parts as noted. Order the Muffler Kit for the built-in diffuser as shown.



<u>Key No.</u>	<u>Part No.</u>	<u>Description</u>
1	530-026949	Muffler Diffuser
2	530-024362	Muffler Body
3	530-024364	Spark Arresting Screen
4	530-024361	Muffler Cover



<u>Key No.</u>	<u>Part No.</u>	<u>Description</u>
5	530-069243	Muffler Kit

PARTS LIST NO. 530-066419-1/31/90		WEED EATER® PARTS LIST	LINE TRIMMER MODEL: XR-20 & XR-20T
Page No. 6	Replaces 66419-4/18/88		

5. **CUTTING HEAD ASSEMBLY'S-PAGE 1.**

Check the illustrations listed below to determine the type of cutting head on your unit. When ordering a complete assembly, always order Tap-N-Go II. Tap-N-Go II is interchangeable with Tap-N-Go I as an assembly.

Note the differences in the cutting line exit holes and order parts accordingly.

