



TECHNICAL SERVICE BULLETIN
T08 - 02 - R1

Product Service
Department

11/17/2008

To: All RedMax Distributors and Dealers
Subject: "Twilt" Fuel Filter

PRODUCT MODEL

SERIAL NUMBER

All Models below 30cc in engine size.

ALL

Issue: Fibers from the felt filter may become detached and reduce fuel flow in the carburetor causing idle difficulties or acceleration difficulties due to the very small orifices inside of the small displacement carburetors. On engines above 30cc, these small fibers will wash through the orifices.

Solution: New Twilt Filter for all engines below 30cc. The difference in the filters is the inside filter media as shown below. The old material is a mesh screen and the new material is twilt that has a much finer particle filtration capability. This will keep the felt fibers of the filter from filtering through the screens and contaminating the carburetor.

The new "Twilt" filter is part number 330685400

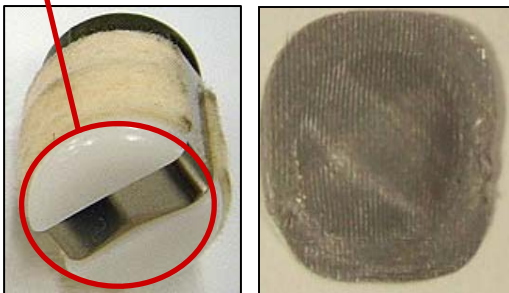
Identifying the Filters

Original Style

For Engines **Above** 30cc

2 Screen Steel Mesh Filter

External, White Cap

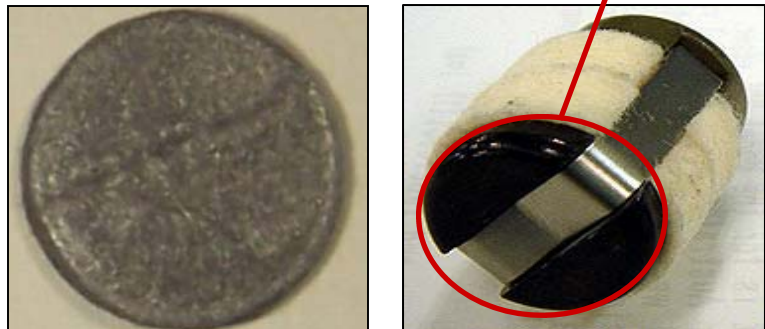


New Style

For Engines **Below** 30cc

"Twilt" Woven Material Filter

External, Black Cap



Important Note! Engines with larger displacement require higher fuel flow and will continue to use the current filter, part number 330285400

2 Stroke Oil Requirements

Attention:

Use only RedMax “Max Life”, Synthetic blend Premium Air-Cooled two-stroke engine oil or oil certified to ISO-L-**EGD** (ISO\CD1378) standard AND one that is JASO-**FD** registered.

RedMax Air-Cooled “Max Life”, Synthetic blend Premium two-stroke engine oil and ISO-L-**EGD** (ISO/CD1378) AND JASO-**FD** oils are **fully compatible** with gasoline’s containing 10% Ethanol. RedMax Air-Cooled “Max Life”, Synthetic blend Premium two-stroke engine oil and ISO-L-**EGD** (ISO/CD1378) AND JASO-**FD** oils are **Universal** and should be mixed at 50:1 ratio for all 2 stroke air cooled engines sold in the past regardless of mixing ratios specified in those manuals.

If the oil is registered with JASO, the JASO Logo with **FD** and **registration number** will be displayed on the container. The highest quality JASO rating is “**FD**”, which equals the ISO-L-**EGD** rating. Lower ratings are “FC”, “FB”, and “FA”.



Attention: Engine problems due to inadequate lubrication caused by failure to use ISO-L-**EGD** certified and JASO **FD** registered oil such as “MaxLife”, RedMax Synthetic blend Premium 2-stroke oil **WILL VOID THE RedMax TWO-STROKE ENGINE WARRANTY.**

WARNING: Do not use NMMA (National Marine Manufacturers Association), BIA (Boating Industry Association), and TCW (two cycle water cooled) oils designed for MoPeds or Outboard, water cooled Marine Engines. Do not use API (American Petroleum Institute), TC (Two Cycle) labeled oils. The API-TC test standard has been discontinued by API in 1995 and it no longer exists.

IMPORTANT : **Gasoline/Oil mixture Storage Recommendations**

Store your gasoline or gasoline/oil mixture in a cool dry area in a tightly sealed approved container to limit the entry of moisture and additional air (oxygen). Moisture and air cause the development of varnish and gum, making the fuel stale. Stored gasoline and gasoline/oil mixture ages and loses its octane rating and volatility. Do not mix more gasoline/oil than you intend to use in 30 days, and 60 days when fuel stabilizer is added. RedMax Air-Cooled “Max Life” Synthetic blend Premium two-stroke engine oil **“Contains fuel stabilizer”** and will automatically extend your gasoline/oil mixture life up to 60 days.