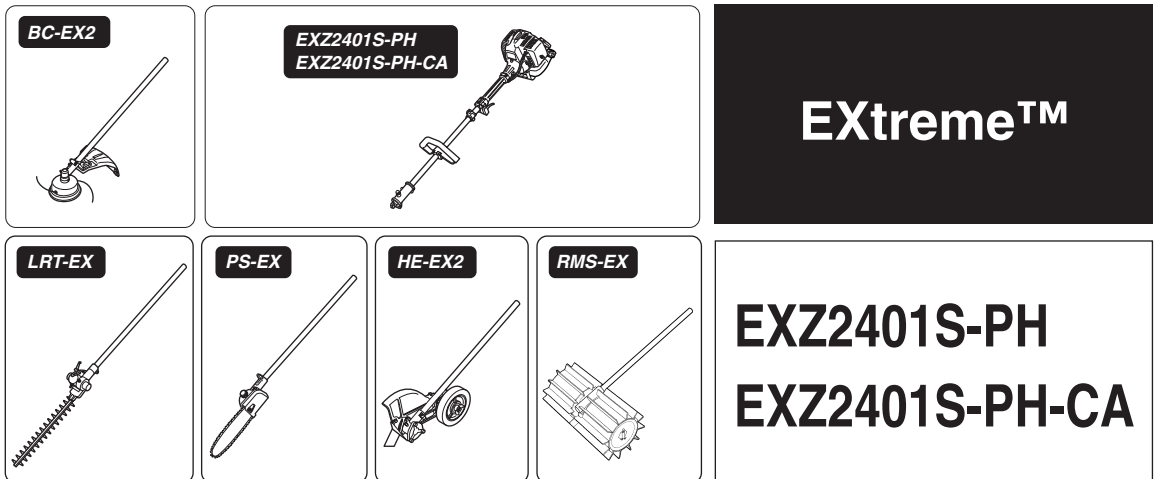




ILLUSTRATED PARTS LIST



⚠ WARNING ⚠

The engine exhaust from this product contains chemicals known to the State of California to cause cancer, birth defects or other reproductive harm.

⚠ AVERTISSEMENT ⚠

Les échappements du moteur de ce produit contiennent des produits chimiques connus par l'Etat de Californie comme étant responsables de cancers, d'anomalies congénitales et d'autres atteintes à l'appareil reproducteur.

⚠ ADVERTENCIA ⚠

Los gases de escape del motor de este producto contienen sustancias químicas conocidas por el Estado de California como causantes de cáncer, malformaciones en recién nacidos y otros problemas de reproducción.

⚠ WARNING ⚠

Before using our products, please read this manual carefully to understand the proper use of your unit.

⚠ AVERTISSEMENT ⚠

Avant d'utiliser ce produit, veuillez lire attentivement ce manuel afin de bien comprendre le bon fonctionnement de cet appareil.

⚠ ADVERTENCIA ⚠

Antes de usar nuestros productos, lea detenidamente este manual a fin de familiarizarse con el uso correcto de este aparato.

APPLICABLE SERIAL NUMBERS :

ENGINE UNIT	60100000	and up
PH-EX2	60300000	and up
BC-EX2	50200000	and up
LRT-EX	000531	and up
PS-EX	000000	and up
HE-EX2	000101	and up
RMS-EX	000101	and up

NUMEROS DE SERIE APPLICABLES :

MOTEUR	60100000	et au-delà
PH-EX2	60300000	et au-delà
BC-EX2	50200000	et au-delà
LRT-EX	000531	et au-delà
PS-EX	000000	et au-delà
HE-EX2	000101	et au-delà
RMS-EX	000101	et au-delà

NÚMEROS DE SERIE APLICABLES:

UNIDAD DE MOTOR	60100000	y superior
PH-EX2	60300000	y superior
BC-EX2	50200000	y superior
LRT-EX	000531	y superior
PS-EX	000000	y superior
HE-EX2	000101	y superior
RMS-EX	000101	y superior

EXtreme™

**EXZ2401S-PH
EXZ2401S-PH-CA
[PH-EXZ
BC-EX2
ENGINE]**

**LRT-EX (ATT)
PS-EX (ATT)
HE-EX2 (ATT)
RMS-EX (ATT)**

NOTE :

1. Use RedMax/ZENOAH genuine parts as specified in the parts list for repair and/or replacement.
2. RedMax/ZENOAH does not warrant the machines, which have been damaged by the use of any parts other than those specified by the company.
3. When placing parts orders for repair and/or replacement, check if the model name and the serial number are applicable to those specified in the parts list, then use parts number described in the parts list.
4. The contents described in the parts list may change due to improvement.
5. The parts for the machine shall be supplied seven (7) years after the machine is discontinued. [It is possible that some specific parts may be subject to change of their delivery term and list price within the limit of seven (7) years after the machine is discontinued. It is also possible that some parts may be available even after the limit of seven (7) years.]

REMARQUE :

1. Pour toute réparation et/ou remplacement, utiliser uniquement les pièces de marque RedMax/ZENOAH comme précisé dans la liste des pièces.
2. RedMax/ZENOAH ne garantit pas les machines qui ont été endommagées suite à l'utilisation de pièces autres que celles spécifiées par la société.
3. Lorsque vous passez une commande pour une réparation et/ou un remplacement, vérifier si le nom du modèle et le numéro de série s'appliquent à ceux précisés dans la liste des pièces, utiliser ensuite le numéro de pièce figurant dans la liste des pièces.
4. Le contenu décrit dans la liste des pièces peut être modifié dans un souci d'amélioration.
5. Les pièces de la machine seront disponibles pendant sept (7) ans après l'arrêt de fabrication de cette machine. [Il est possible que certaines pièces particulières soient soumises à des changements en ce qui concerne les conditions de livraison et le prix courant dans une limite de sept (7) ans une fois la fabrication de la machine arrêtée. Il est également possible que certaines pièces soient toujours disponibles même après la limite de sept (7) ans.]

NOTA:

1. Para reparaciones o cambios, utilice piezas RedMax/ZENOAH genuinas según se especifica en la lista de piezas.
2. RedMax/ZENOAH no garantiza máquinas que se han dañado por el uso de piezas distintas a las especificadas por la compañía.
3. Al solicitar piezas para reparación y/o reemplazo, compruebe que el nombre y el número de serie del modelo corresponden con los indicados en la lista de piezas, y utilice los números de pieza indicados en la lista de piezas.
4. Las piezas incluidas en la lista de piezas pueden cambiar debido a mejoras.
5. Se suministrarán piezas para la máquina hasta siete (7) años después de que la máquina haya sido discontinuada. [Algunas piezas específicas pueden estar sujetas a cambios en los términos de entrega y precios de lista dentro de un límite de siete (7) años después de que la máquina ha sido discontinuada. También puede suceder que ciertas piezas sigan estando disponibles una vez transcurrido el límite de siete (7) años.]

APPLICABLE SERIAL NUMBERS :

ENGINE UNIT	60100000	and up
PH-EXZ	60300000	and up
BC-EX2	50200000	and up
LRT-EX	000531	and up
PS-EX	000000	and up
HE-EX2	000101	and up
RMS-EX	000101	and up

NUMEROS DE SERIE APPLICABLES :

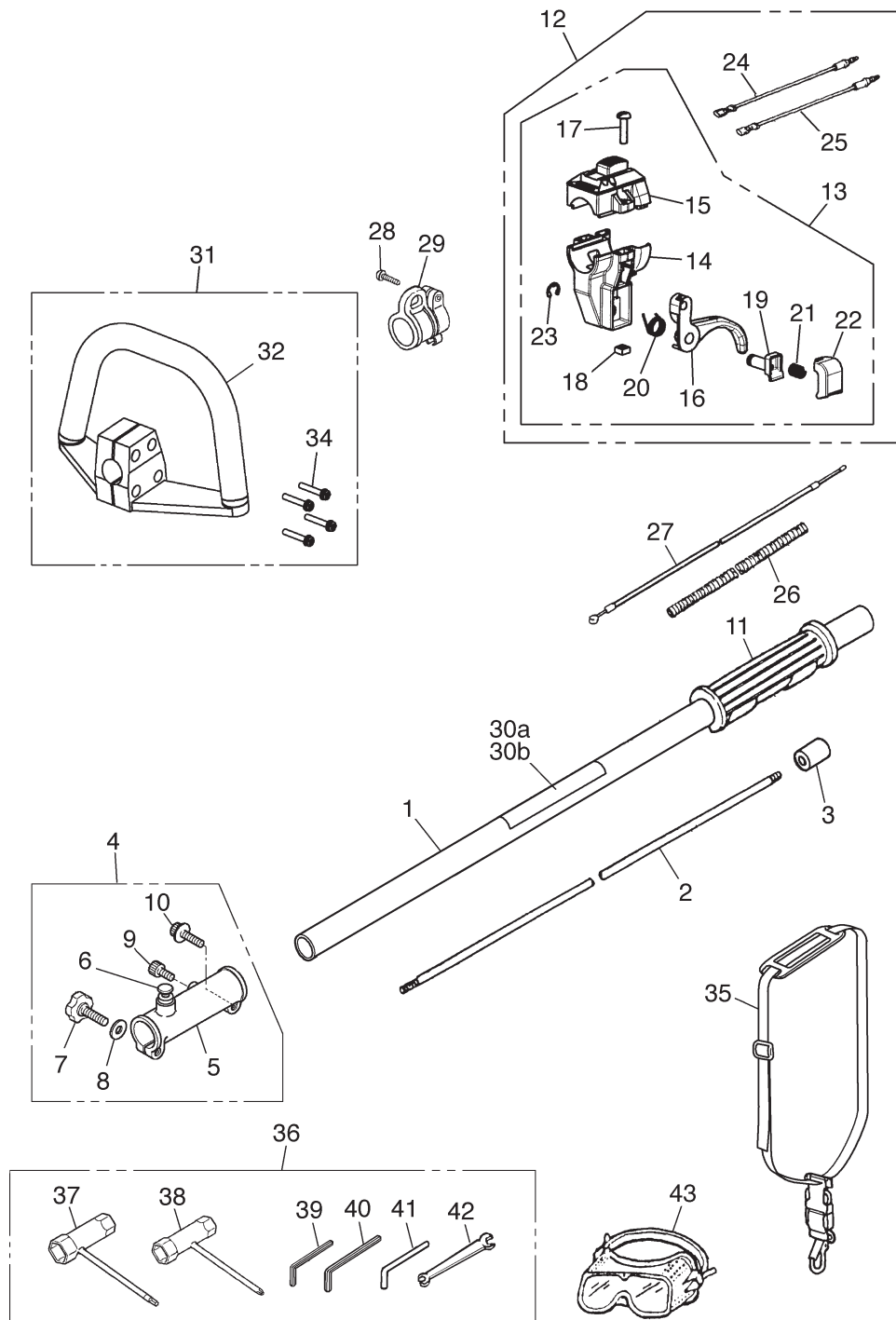
MOTEUR	60100000	et au-delà
PH-EXZ	60300000	et au-delà
BC-EX2	50200000	et au-delà
LRT-EX	000531	et au-delà
PS-EX	000000	et au-delà
HE-EX2	000101	et au-delà
RMS-EX	000101	et au-delà

NÚMEROS DE SERIE APLICABLES:

UNIDAD DE MOTOR	60100000	y superior
PH-EXZ	60300000	y superior
BC-EX2	50200000	y superior
LRT-EX	000531	y superior
PS-EX	000000	y superior
HE-EX2	000101	y superior
RMS-EX	000101	y superior

13. Parts list : EXZ2401S-PH / EXZ2401S-PH-CA

Fig.1 PH-EXZ (S/N 60300000 and up)



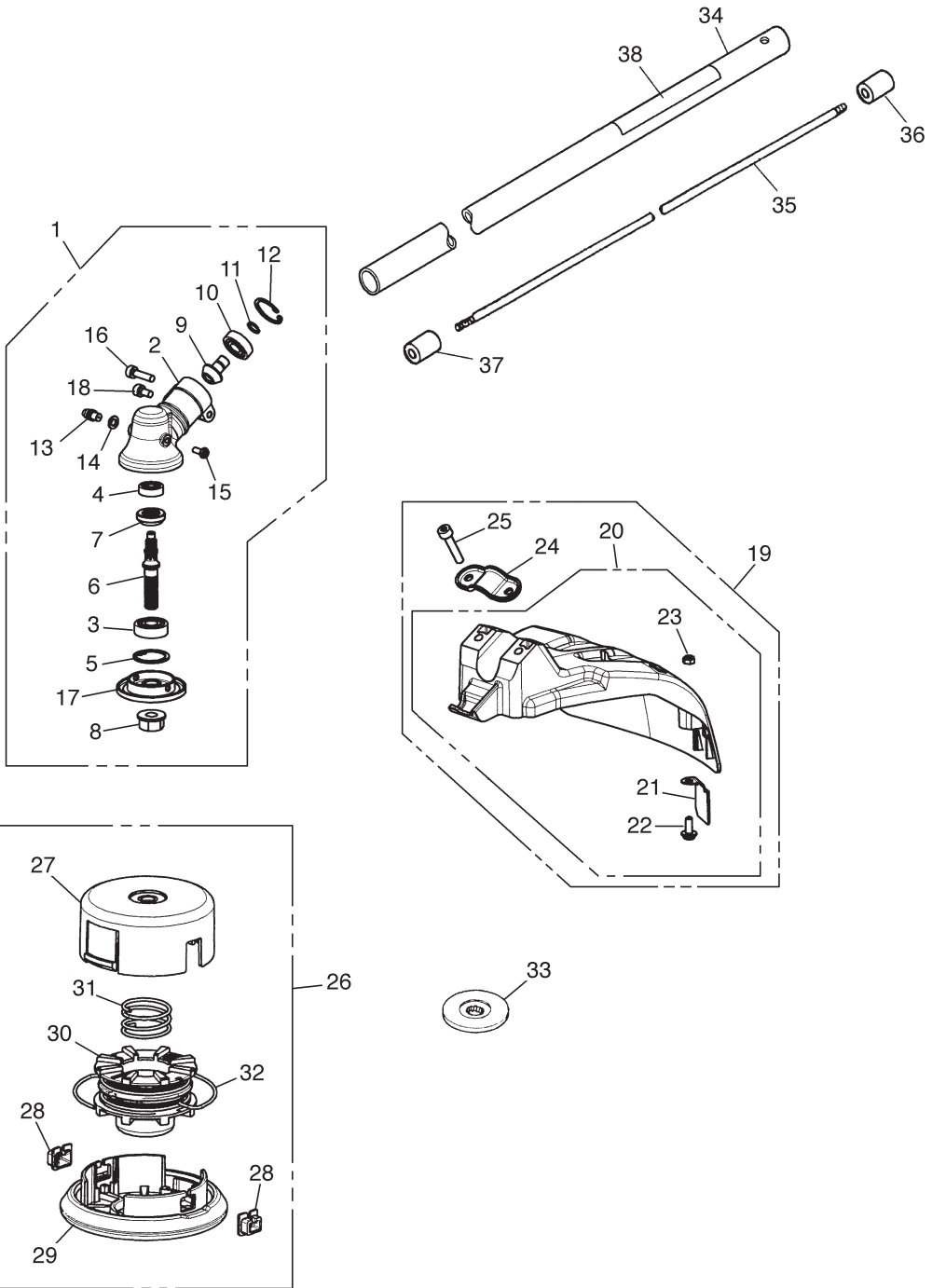
EXZ2401S-PH / EXZ2401S-PH-CA

Fig.1 PH-EXZ (S/N 60300000 and up)

Key#	Description	Part Number	Q'ty	Key#	Description	Part Number	Q'ty
1	PIPE COMP., ϕ 24x750	848-J8P-5820	1				
2	SHAFT, 786x7	T3075-12210	1				
3	SPACER	6036-12250	1				
4	JOINT, PIPE-ASS'Y	T3087-12400	1				
5	• JOINT	T3087-12410	1				
6	• STOPPER	T3087-12600	1				
7	• KNOBBOLT	6036-12420	1				
8	• WASHER	01643-30823	1				
9	• BOLT	01252-30510	1				
10	• BOLT	3540-13260	1				
11	GRIP	848-J80-32H2	1				
12	LEVER COMP.	848-8R2-0344	1				
13	• LEVER	848-8R2-0314	1				
14	•• STAY	6110-14410-01	1				
15	•• COVER	848-8RA-0340	1				
16	•• LEVER	T3002-12202-03	1				
17	•• SCREW	6110-14410-04	2				
18	•• NUT	6110-14410-05	2				
19	•• SHAFT	6110-14410-06	1				
20	•• SPRING	6110-14410-07	1				
21	•• SPRING	6110-14410-08	1				
22	•• BUTTON	T3032-14410-09	1				
23	•• E-RING	6110-14410-10	1				
24	• CORD (A) black	T3002-12220	1				
25	• CORD (B) red	T3002-12230	1				
26	TUBE	T3002-12240	1				
27	CABLE	T3002-83100	1				
28	HANGER COMP.	T3300-17202	1				
29	SCREW	0263-90520	1				
30a	PLATE-NAME (EXZ2401S-PH)	848-J9M-90R0	1				
30b	PLATE-NAME (EXZ2401S-PH-CA)	848-J9N-90R0	1				
31	HANDLE ASSY	T3195-14002	1				
32	• HANDLE	T3195-14102	1				
34	• SCREW	T4960-53030	4				
35	STRAP ASSY	848-J82-3610	1				
36	TOOL-SET	848-8U0-0110	1				
37	• SOCKET, 16x17xt27	848-8U1-0040					
38	• SOCKET, 13x16	T3039-91310	1				
39	• WRENCH	09007-00425	1				
40	• WRENCH	09007-00528	1				
41	• BAR	3540-91110	1				
42	• SPANNER	3540-91120	1				
43	GOGGLE	848-A56-92C0	1				

13. Parts list : EXZ2401S-PH / EXZ2401S-PH-CA

Fig.2 BC-EX2 (S/N 50200000 and up)



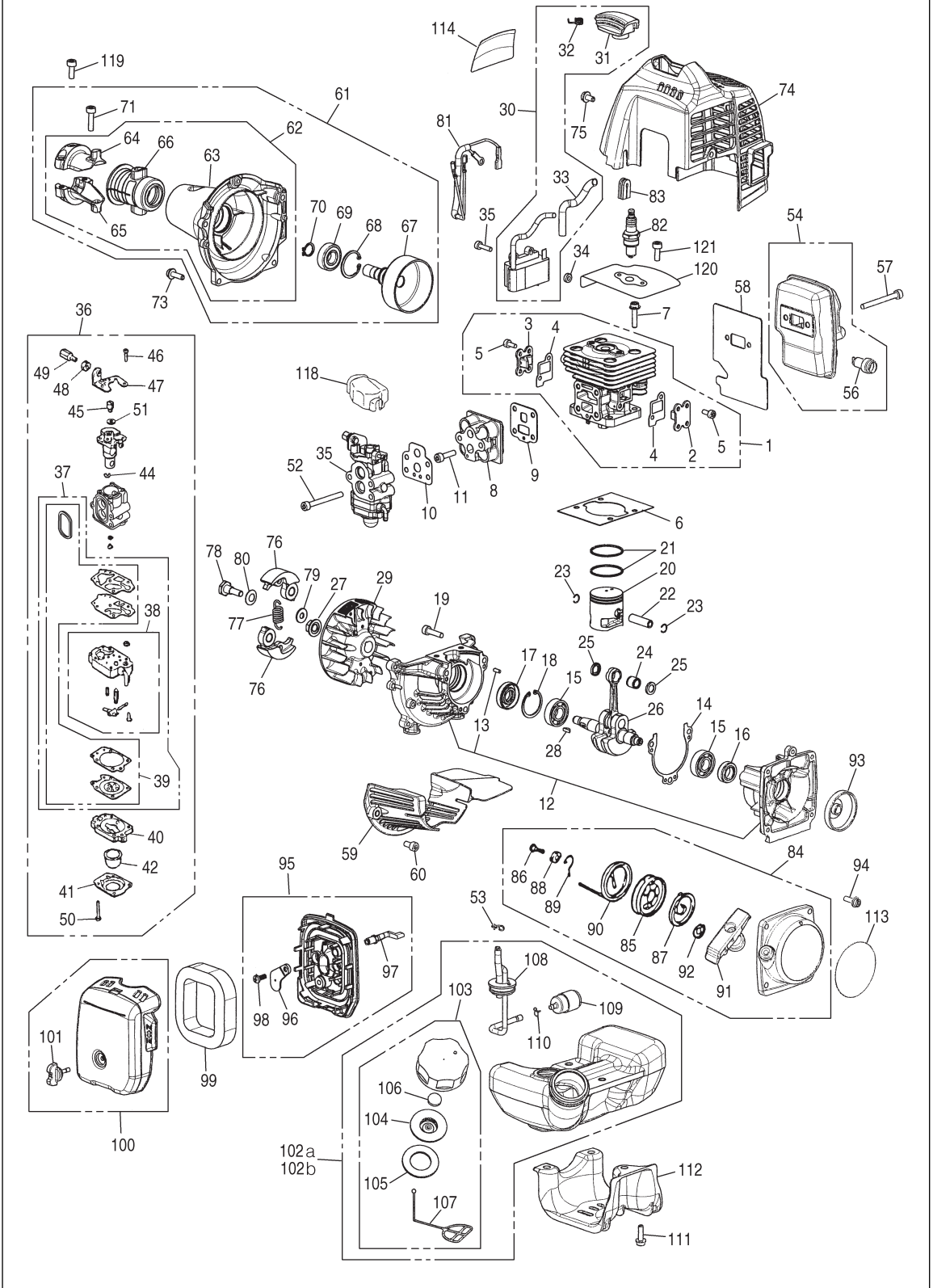
EXZ2401S-PH / EXZ2401S-PH-CA

Fig.2 BC-EX2 (S/N 50200000 and up)

Key#	Description	Part Number	Q'ty	Key#	Description	Part Number	Q'ty
1	GEARCASE ASSY	T3195-31001	1				
2	• GEARCASE	848-B20-62A0	1				
3	• BEARING	06004-06000	1				
4	• BEARING	06000-00626	1				
5	• RING	04065-02612	1				
6	• SHAFT	T3195-13210	1				
7	• GEAR	T3300-93250	1				
8	• NUT	T3002-13260	1				
9	• PINION	T3195-13310	1				
10	• BEARING	06001-00609	1				
11	• RING	3210-13330	1				
12	• RING	04065-02412	1				
13	• FITTING	3199-13350	1				
14	• WASHER	01641-20608	1				
15	• BOLT	0225-00410	1				
16	• BOLT TORX	4820-13180	1				
17	• HOLDER (A)	T3300-91340	1				
18	• BOLT TORX	4820-12350	1				
19	GUARD ASSY	T3195-24003	1				
20	• GUARD COMP.	T3195-24103	1				
21	•• BLADE	T3002-24121	1				
22	•• SCREW TORX	T4960-51431	1				
23	•• NUT	3320-15310	1				
24	• CLAMP	3520-24120	1				
25	• BOLT TORX	T4950-63000	2				
26	TAP HEAD COMP.	PT104 Plus	1				
27	• CASE	T3189-15112	1				
28	• EYELET	T3189-15191	2				
29	• COVER	T3189-15132	1				
30	• CORD HOLDER	T3189-15142	1				
31	• SPRING	T3189-15160	1				
32	• CORD	T3189-15180	1				
33	HOLDER (B)	6019-13250	1				
34	PIPE COMP., \varnothing 24x750	T3102-12100	1				
35	SHAFT, 755x7	T3102-12210	1				
36	SHAFT-JOINT	6036-12241	1				
37	SPACER	6036-12250	1				
38	PLATE-NAME	848-J8R-90R1	1				

13. Parts list : EXZ2401S-PH / EXZ2401S-PH-CA

Fig.3 ENGINE UNIT (60100000 and up)



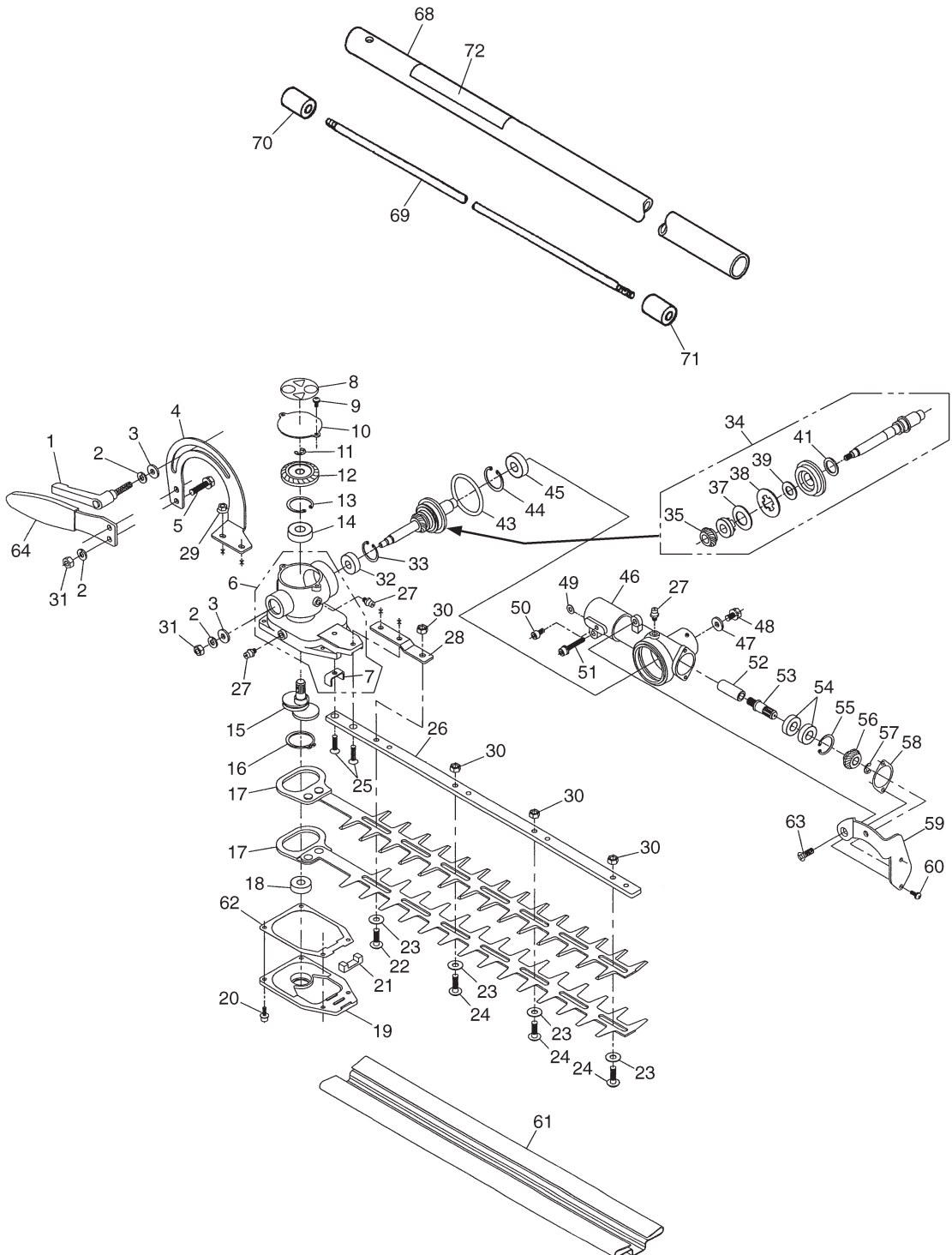
EXZ2401S-PH / EXZ2401S-PH-CA

Fig.3 ENGINE UNIT (60100000 and up)

Key#	Description	Part Number	Q'ty	Key#	Description	Part Number	Q'ty
1	CYLINDER COMP.	848-F08-1210	1	61	HOUSING ASSY	848-F00-5301	1
2	• COVER, TR-S	848-F08-12C0	1	62	• HOUSING COMP.	T1551-31100	1
3	• COVER, TR-F	848-F08-12D0	1	63	•• HOUSING	T1551-31110	1
4	• GASKET, TR	848-F08-12E0	2	64	•• BRACKET(A)	T1700-31212	1
5	• BOLT	848-814-1000	4	65	•• BRACKET (B)	T1700-31221	1
6	GASKET, base	T1551-12211	1	66	•• CUSHION	T1700-31232	1
7	BOLT TORX	4820-12130	4	67	• DRUM	848-F30-51A1	1
8	INSULATOR	848-F08-14A1	1	68	• RING	04065-02812	1
9	GASKET, insu	848-F08-14B2	1	69	• BEARING	T1701-31150	1
10	GASKET, carb	848-F08-14C0	1	70	• SNAP RING	04064-01210	1
11	BOLT TORX	T4950-52001	4	71	• BOLT TORX	4820-13180	2
12	CRANKCASE COMP.	T1551-21101	1	73	BOLT TORX	4820-85510	4
13	• PIN	2629-21130	3	74	COVER, engine	848-F08-31A1	1
14	GASKET, case	T1551-21141	1	75	BOLT TORX	848-815-1002	2
15	BEARING	06030-06001	2	76	SHOE	T1551-51111	2
16	SEAL	4810-21210	1	77	SPRING	4820-51220	1
17	SEAL	1850-21220	1	78	SCREW	1140-51250	2
18	RING	04065-02812	1	79	WASHER	1140-51230	2
19	BOLT TORX	4820-13180	3	80	WASHER	1140-51242	2
20	PISTON	848-F08-41A2	1	81	CORD COMP.	T1551-73200	1
21	RING	848-8C3-4101	2	82	SPARKPLUG (Champion RZ7C)	3699-91809	1
22	PIN	1600-41310	1	83	GROMET	4810-72120	1
23	RING	1260-41320	2	84	RECOIL ASSY	T1551-75100	1
24	BEARING	T1551-41410	1	85	• REEL	4500-75120	1
25	WASHER	1101-41340	2	86	• SCREW	4500-75150	1
26	CRANKSHAFT COMP.	848-F08-4201	1	87	• SPRING	1850-75130	1
27	NUT	1650-43230	1	88	• COLLAR	4500-75180	1
28	KEY	1000-43240	1	89	• ARM	4500-75190	1
29	ROTOR	4810-71110	1	90	• ROPE	4810-75160	1
30	COIL ASSY	848-F08-7131	1	91	• KNOB	3330-75421	1
31	• CAP	4810-72111	1	92	• PLATE	4810-75170	1
32	• SPRING	848-F08-71G0	1	93	PULIEY	4500-75210	1
33	• TUBE	848-8MX-0700	1	94	BOLT TORX	4820-32120	4
34	SPACER	1260-71261	2	95	BODY ASSY	848-F00-8310	1
35	BOLT TORX	4820-72150	2	96	• PLATE, choke	T1512-82130	1
36	CARBURETOR ASSY	848-F08-8101	1	97	• LEVER	T1600-82140	1
37	• REBUILD KIT	848-F60-0630	1	98	• SCREW	T1108-82190	1
38	•• BODY ASSY	1850-81450	1	99	ELEMENT	T1551-82170	1
39	•• GASKET KIT	4810-06021	1	100	COVER ASSY	848-F62-8320	1
40	• BODY	1850-81490	1	101	• KNOB	T1108-82220	1
41	• COVER	1850-81520	1	102a	TANK ASSY	848-F00-8500	1
42	• PUMP	1751-81510	1	102b	TANK ASSY (CA only)	848-F0M-8500	1
44	• RING	1751-81130	1	103	• CAP ASSY	T1015-85202	1
45	• SWIVEL	1881-81140	1	104	•• HOLDER ASSY	4500-85300	1
46	• SCREW	1752-81110	2	105	•• PACKING	4500-85220	1
47	• BRACKET	5500-81120	1	106	•• FILTER	5601-85260	1
48	• NUT	1751-81180	1	107	•• STOPPER	4820-85260	1
49	• SCREW	1918-81170	1	108	• PIPE COMP.	T1551-85300	1
50	• SCREW	1850-81530	4	109	• FILTER	3302-85400	1
51	• WASHER	5500-81160	1	110	• CLIP	1260-85460	1
52	BOLT TORX	4820-15310	2	111	BOLT TORX	4820-85510	3
53	CLIP	1950-86120	1	112	GUARD, tank	T1551-31910	1
54	MUFFLER ASSY	848-F08-1510	1	113	LABEL, recoil	T1551-75410	1
56	• ARRESTER	4810-15140	1	114	LABEL, cover	T1551-31130	1
57	BOLT TORX	4820-15310	2	118	COVER	4500-81910	1
58	GASKET, muff	848-F08-15C1	1	119	BOLT	4820-12350	1
59	PLATE	848-F00-15D1	1	120	PLATE	848-F08-12G0	1
60	BOLT TORX	4820-12350	2	121	BOLT	4820-12350	2

13. Parts list : EXZ2401S-PH / EXZ2401S-PH-CA

Fig.4 LRT-EX (S/N 000531 and up)



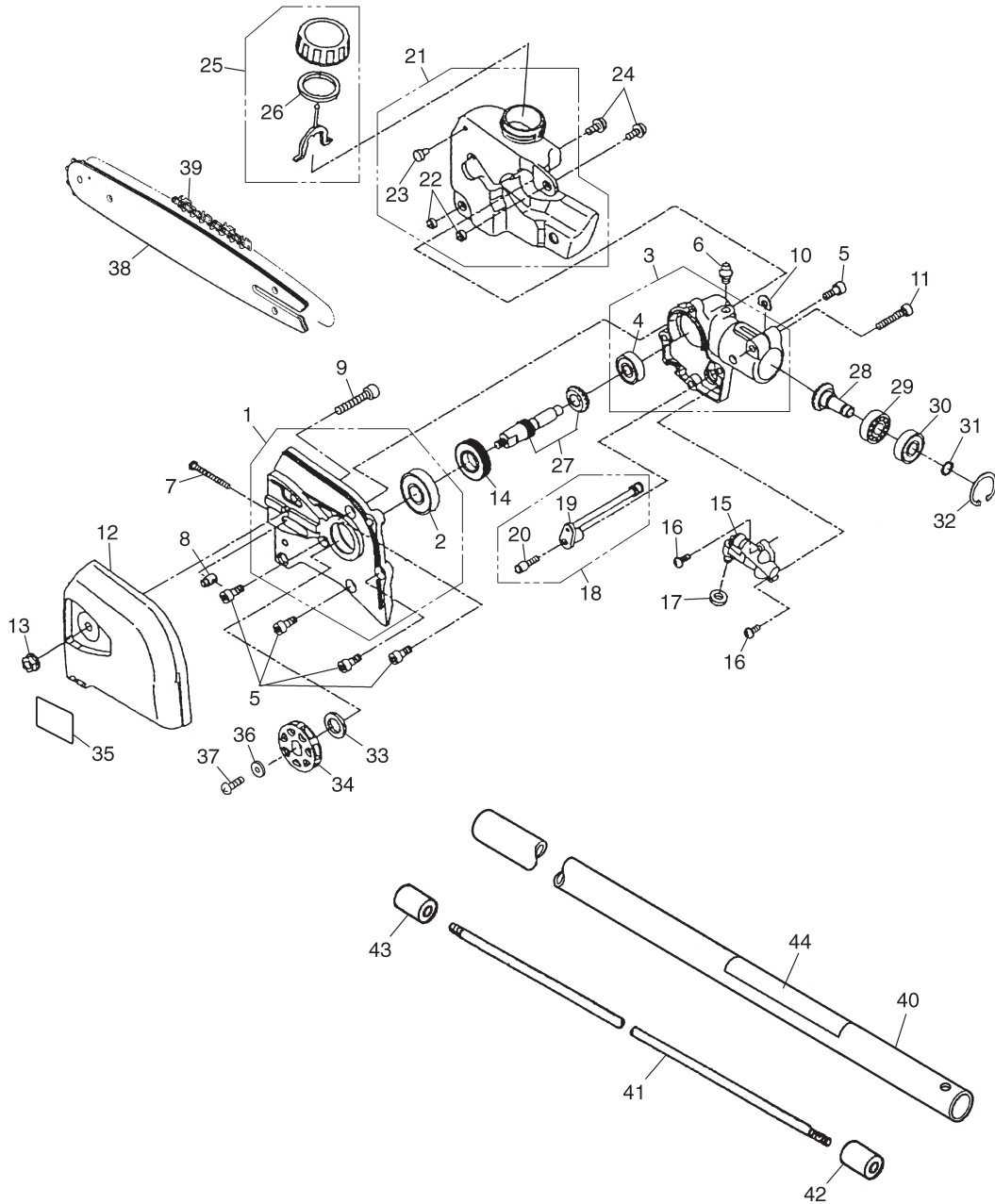
EXZ2401S-PH / EXZ2401S-PH-CA

Fig.4 LRT-EX (S/N 000531 and up)

Key#	Description	Part Number	Q'ty	Key#	Description	Part Number	Q'ty
1	LEVER, clamp	848-A2R-61U0	1	53	GEAR SHAFT B	6598-13820	1
2	WASHER M6	0290-20615	4	54	BEARING 6900RS	6782-13830	2
3	WASHER 6x16x2.0	6782-13650	2	55	SNAP RING	04065-02212	1
4	ANGLE ADJUSTER	848-A2R-61X0	1	56	BEVEL GEAR	6782-13850	1
5	BOLT M6x12	0225-10620	2	57	SNAP RING	6598-13330	1
6	CASING A SET	6782-13200	1	58	PACKING	6598-13860	1
7	• PLATE	6782-13220	1	59	PLATE	848-A2T-61S0	1
8	LABEL	6782-13250	1	60	SCREW M4x10	0263-10410	2
9	SCREW M4x8	0263-10408	2	61	BLADE COVER	6782-13910	1
10	COVER	6598-13320	1	62	PACKING	6782-13470	1
11	SNAP RING	6598-13330	1	63	SCREW	848-A2R-61F0	1
12	BEBEL GEAR	6782-13340	1	64	HANDLE	848-A2R-61Y0	1
13	SNAP RING	04065-02612	1				
14	BEARING	06004-06000	1	68	PIPE COMP., \varnothing 24x750	T3102-12100	1
15	CRANK SHAFT	6782-13370	1	69	SHAFT, 755x7	T3102-12210	1
16	SNAP RING	04064-02815	1	70	SHAFT-JOINT	6036-12241	1
17	BLADE	6782-13411	2	71	SPACER	6036-12250	1
18	BEARING 608Z	6782-13430	1	72	PLATE-NAME	848-A2H-90R4	1
19	COVER	6782-13441	1				
20	BOLT M4x12	848-A2R-61C0	4				
21	FELT	6782-13460	1				
22	SCREW	3884-11750-10	1				
23	WASHER	3880-11780	4				
24	SCREW L17	6598-13510	3				
25	SCREW M5x20	6598-13530	2				
26	GUIDE PLATE	6782-13540	1				
27	GREESE FITTING	3199-13350	3				
28	PLATE	6782-13550	1				
29	NUT M5	6782-14470	2				
30	NUT M6	3880-11790	4				
31	NUT M6	0280-10605	3				
32	BEARING 608 2RS	6598-13430	1				
33	SNAP RING	04065-02212	1				
34	SHAFT KIT	T4008-13600	1				
35	• GEAR(C)	T4008-13630	1				
37	• SPRING	T4008-13650	1				
38	• PLATE	T4008-13660	1				
39	• WASHER	T4008-13670	1				
41	• WASHER	T4008-13680	1				
43	O-RING P41	6598-13620	1				
44	SNAP RING	04065-02612	1				
45	BEARING	06004-06000	1				
46	CASING N	848-A2R-61A0	1				
47	WASHER 6x16x2.0	6782-13650	1				
48	BOLT M6x12	0225-10612	1				
49	WASHER 5x10x1.0	6782-13720	1				
50	BOLT M5x10	848-A2R-61D0	1				
51	BOLT M5x30	848-A2R-61E0	1				
52	JOINT	6782-13810	1				

13. Parts list : EXZ2401S-PH / EXZ2401S-PH-CA

Fig.5 PS-EX (S/N 000000 and up)



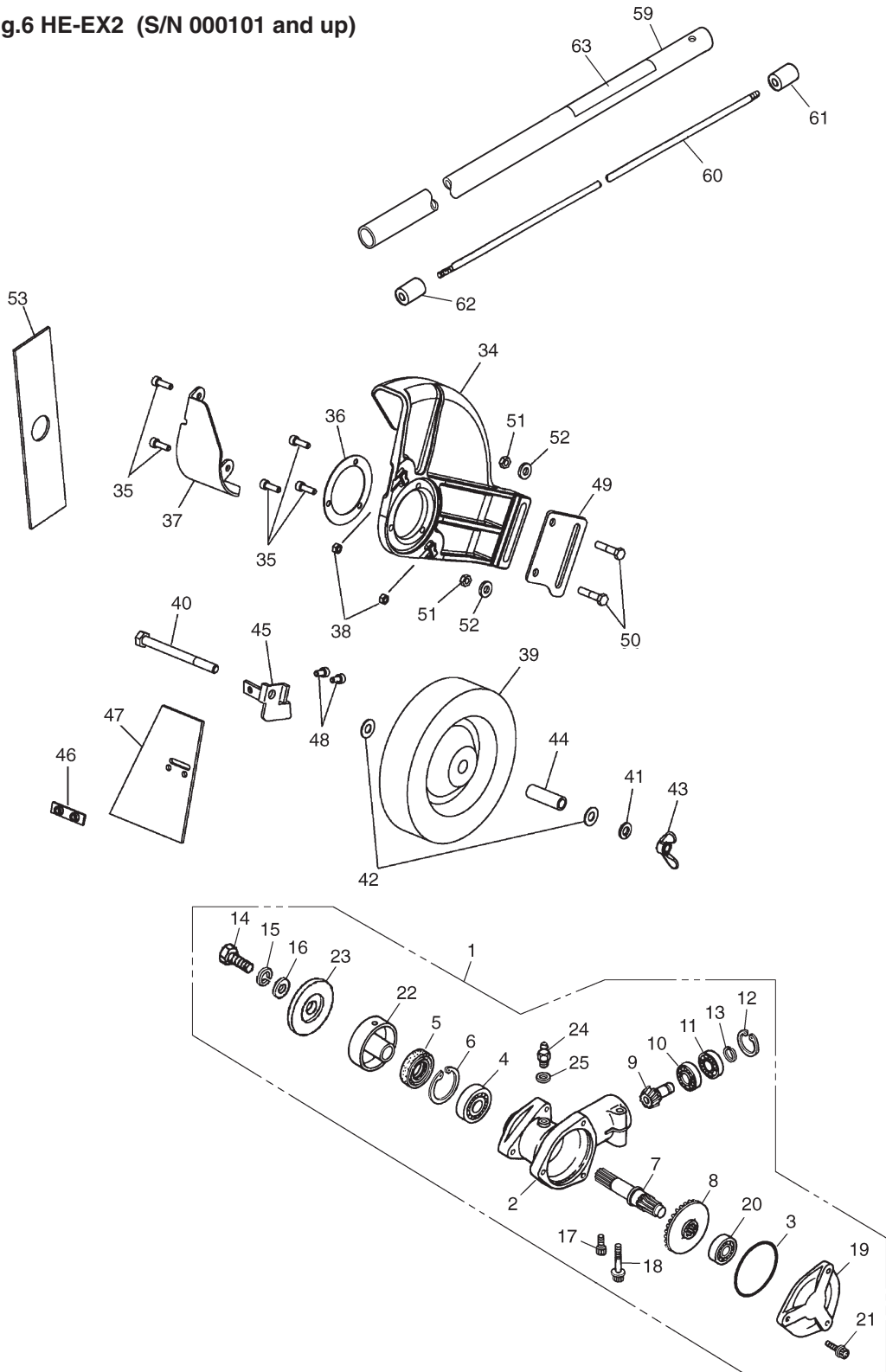
EXZ2401S-PH / EXZ2401S-PH-CA

Fig.5 PS-EX (S/N 000000 and up)

Key#	Description	Part Number	Q'ty	Key#	Description	Part Number	Q'ty
1	GEAR CASE (L)COMP.	848-A52-6211	1				
2	• BEARING	06004-06001	1				
3	GEAR CASE (R)COMP.	T3073-13200	1				
4	• BEARING	06002-00627	1				
5	BOLT	01252-30512	5				
6	FITTING	3199-13350	1				
7	SCREW, tensioner	T3073-13310	1				
8	NUT, tensioner	T3073-13320	1				
9	BOLT	01252-30630	1				
10	SHIM	T3073-13250	1				
11	BOLT	3245-11350	1				
12	CHAIN COVER	T3073-13510	1				
13	NUT	T3073-13520	1				
14	WORM GEAR	T3073-13560	1				
15	OIL PUMP ASSY	T3073-13550	1				
16	SCREW	0263-30410	2				
17	GASKET	T3073-13580	1				
18	OIL PIPE ASSY	T3073-13700	1				
19	• OIL PIPE	T3073-13710	1				
20	• FILTER	T3073-13720	1				
21	OIL TANK ASSY	848-A52-5511	1				
22	• COLLAR	T3073-13820	2				
23	• VALVE	T3073-13830	1				
24	SCREW	T3073-13860	2				
25	OIL CAP ASSY	T3073-13900	1				
26	• GASKET OIL CAP	T3073-13920	1				
27	GEAR SHAFT	T3073-13370	1				
28	BEVEL, pinion	T3073-13380	1				
29	BEARING	06000-00609	1				
30	BEARING	06002-00609	1				
31	SNAP RING	3210-13330	1				
32	SNAP RING	04065-02412	1				
33	COLLAR	T3073-13530	1				
34	SPROCKET	T3073-13540	1				
35	LABEL	T3073-13590	1				
36	WASHER	T3073-13350	1				
37	SCREW	T3073-13360	1				
38	BAR 12" (OREGON)	109666	1				
39	CHAIN (OREGON)	90SG44X	1				
40	PIPE-COMP, ø24x750	T3102-12100	1				
41	SHAFT, 755x7	T3102-12210	1				
42	SHAFT-JOINT	6036-12241	1				
43	SPACER	6036-12250	1				
44	PLATE-NAME	848-A51-90R3	1				

13. Parts list : EXZ2401S-PH / EXZ2401S-PH-CA

Fig.6 HE-EX2 (S/N 000101 and up)



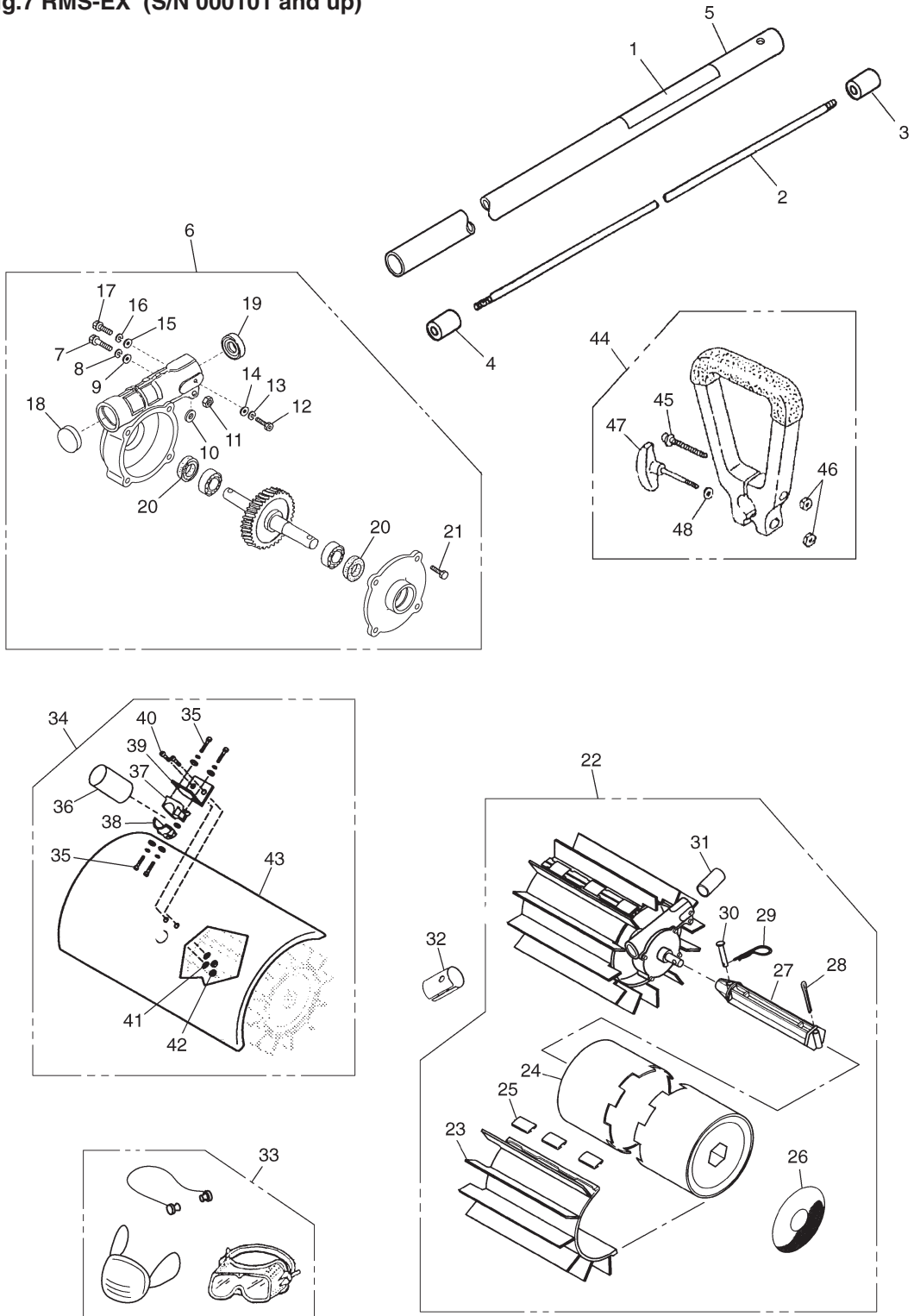
EXZ2401S-PH / EXZ2401S-PH-CA

Fig.6 HE-EX2 (S/N 000101 and up)

Key#	Description	Part Number	Q'ty	Key#	Description	Part Number	Q'ty
1	GEARCASE ASSY	6367-13000	1	62	SPACER	6036-12250	1
2	• GEARCASE	6367-13110	1	63	PLATE-NAME	848-A4J-90R0	1
3	• O-RING	6367-13150	1				
4	• BEARING	06000-06201	1				
5	• SEAL	3180-13141	1				
6	• RING	04065-03212	1				
7	• SHAFT	3541-13212	1				
8	• GEAR	6367-13130	1				
9	• PINION	6367-13140	1				
10	• BEARING	06000-00609	1				
11	• BEARING	06001-00609	1				
12	• RING	04065-02412	1				
13	• RING	3210-13330	1				
14	• BOLT	3579-33260	1				
15	• WASHER	3310-43210	1				
16	• WASHER	01643-30823	1				
17	• BOLT	01252-30512	1				
18	• BOLT	3540-13260	1				
19	• COVER	6367-13120	1				
20	• BEARING	06000-06000	1				
21	• BOLT	3350-31470	3				
22	• HOLDER (A)	3541-13241	1				
23	• HOLDER (B)	3541-13251	1				
24	• FITTING	3199-13350	1				
25	• WASHER	01641-20608	1				
34	GUARD	848-A47-66A1	1				
35	BOLT	T3207-24130	5				
36	PLATE	T3207-24150	1				
37	PLATE, PROTECTOR	T3207-24210	1				
38	NUT	0280-10504	2				
39	WHEEL	848-A47-66P0	1				
40	BOLT	0224-00865	1				
41	WASHER, SPRING	01602-20825	1				
42	WASHER, PLANE	01642-20810	2				
43	WING NUT	01540-50840	1				
44	SLEEVE	T3207-25160	1				
45	BRACKET	848-A47-66U0	1				
46	PLATE, RUBBER	T3207-24320	1				
47	RUBBER	T3207-24330	1				
48	BOLT	01252-30510	2				
49	MAIN BRACKET	848-A47-66R0	1				
50	BOLT	0224-00840	2				
51	NUT	848-A47-66T0	2				
52	WASHER	01642-20810	2				
53	BLADE	6367-15110	1				
59	PIPE-COMP, ø24x750	T3105-12100	1				
60	SHAFT, 755x7	T3102-12210	1				
61	SHAFT-JOINT	6036-12241	1				

13. Parts list : EXZ2401S-PH / EXZ2401S-PH-CA

Fig.7 RMS-EX (S/N 000101 and up)



EXZ2401S-PH / EXZ2401S-PH-CA

Fig.7 RMS-EX (S/N 000101 and up)

Key#	Description	Part Number	Q'ty	Key#	Description	Part Number	Q'ty
1	PIPE COMP.	848-AF0-5820	1	48	• Washer	72030-14130	2
2	SHAFT	T3102-12210	1				
3	SHAFT-JOINT	6036-12241	1				
4	SPACER	6036-12250	1				
5	PLATE-NAME	848-AF0-90R0	1				
6	Gear Case	99909-33031	1				
7	• Bolt M6x30	01252-30630	1				
8	• Spring Washer M6	01601-20619	1				
9	• Washer M6, t1.6	50509	1				
10	• Washer M6, t1.6	50509	1				
11	• Nut M6	01580-10605	1				
12	• Bolt M5x12	01252-30512	1				
13	• Spring Washer M5	01601-20513	1				
14	• Washer M5	01641-2058	1				
15	• Washer M5	01641-2058	1				
16	• Spring Washer M5	01601-20513	1				
17	• Bolt M5x8	80008	1				
18	• Plug, Housing	50502	1				
19	• Oil Seal	50514	1				
20	• Oil Seal	50515	2				
21	• Bolt #10-25 5/8	50508	4				
22	Sweeper Assy	RMS-A	1				
23	• Belt	99909-33005	2				
24	• Drum	99909-33004	4				
25	• Belt Clip	99909-33007	12				
26	• Decal	61739	2				
27	• Drum Axle	99909-33116	2				
28	• Cotter Pin	99909-33020	2				
29	• Hitch Pin	99909-33008	2				
30	• Clevis Pin	99909-33118	2				
31	• Tube Protector	99909-33034	1				
32	Spacer	72959-13330	1				
33	Safety Kit Ear Plugs, Dust Musk & Eye Protection	99909-6771	1				
34	Debris Shield	99909-33021	1				
35	• Boltspw	11022-05250	4				
36	• Spacer	22036-14130	1				
37	• Handle bracket	72051-14110	1				
38	• Lowercap	72051-14120	1				
39	• Shield bracket	99909-22023	1				
40	• Bolt	99909-22024	2				
41	• Washer	99909-22025	2				
42	• Nut	99909-22026	2				
43	• Debris shield	99909-33022	1				
44	Handle Assy	72951-14100	1				
45	• Scraw	72030-14141	1				
46	• Nut	02180-10605	2				
47	• Knob	72030-14120	1				