



PARTS BULLETIN

09-01

Product Service
Department

2/10/09

To: All RedMax Distributors and Dealers

Subject: MSL100 MaxSpeed Loader Head

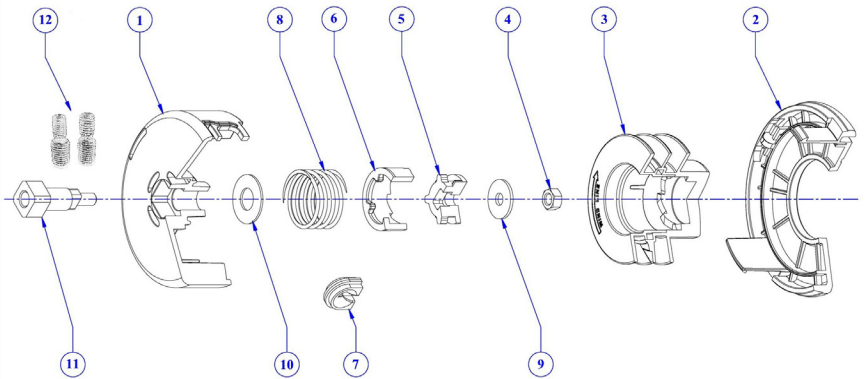
PRODUCT MODEL

ENGINE SERIAL NUMBER

New Product

**All Models Except Curved Shaft Models
and Home Series Models**

1	848JR169M0	Housing
2	848JR169N0	Bottom Cover
3	848JR169P0	Spool
4	848JR169T0	Lock Nut
5	848JR169X0	Inner Cam
6	848JR169W0	Cam Follower
7	848JR169U0	Eyelet
8	848JR169R0	Spring
9	848JR169Z0	Flat Washer
10	848JR169Y0	Flat Washer
11	848JR169L0	Shaft Bolt
12	PTA0708	7&8 mm Arbor Kit



MSL100 MaxSpeed Loader Head Cross Reference

10 mm Lefthand Female Thread with 7mm X 10mm Adaptor and 8mm X 10mm adaptor

Manufacturer	Model	Arbor Size			Manufacturer	Model	Arbor Size		
		10mm x 1.25LHF(STD)	8mm x 1.25LHM	7mm x 1.0 LHM			10mm x 1.25LHF(STD)	8mm x 1.25LHM	7mm x 1.0 LHM
RedMax	TR2300 / 01S	X			Honda	HHT25	X		
	TR2350S	X				HHT35	X		
	BC250	X			Tanaka	TBC240PFS	X		
	BCZ2400 / 01S	X				TBC-225	X		
	BCZ2450S/T	X				TBC-230	X		
	BCZ2600 / 01 / 10S	X				TBC-240	X		
	BCZ2650S/T	X				TBC-255	X		
	BCZ3000S/SW	X				TBC260	X		
	BCZ3001S/SW	X				TBC2340	X		
	BCZ3050S/T	X				TBC-430	X		
	BC3400 / 01DL		X			TBC-600	X		
	BC4400 / 01DW		X			Shindaiwa	T222		
	EXZ2500/2401	X			T231				X
	EX-BC	X			T2510				X
Husqvarna	124	X			T242				X
	125	X			T261			X	
	223	X			T272		X		
	323	X			T3410		X		
	324	X			Echo	All SRM	X		
326	X								

2 Stroke Oil Requirements

Attention:

Use only RedMax “Max Life”, Synthetic blend Premium Air-Cooled two-stroke engine oil or oil certified to ISO-L-**EGD** (ISO\CD1378) standard AND one that is JASO-**FD** registered.

RedMax Air-Cooled “Max Life”, Synthetic blend Premium two-stroke engine oil and ISO-L-**EGD** (ISO/CD1378) AND JASO-**FD** oils are **fully compatible** with gasoline’s containing 10% Ethanol. RedMax Air-Cooled “Max Life”, Synthetic blend Premium two-stroke engine oil and ISO-L-**EGD** (ISO/CD1378) AND JASO-**FD** oils are **Universal** and should be mixed at 50:1 ratio for all 2 stroke air cooled engines sold in the past regardless of mixing ratios specified in those manuals.

If the oil is registered with JASO, the JASO Logo with **FD** and **registration number** will be displayed on the container. The highest quality JASO rating is “**FD**”, which equals the ISO-L-**EGD** rating. Lower ratings are “FC”, “FB”, and “FA”.



Attention: Engine problems due to inadequate lubrication caused by failure to use ISO-L-**EGD** certified and JASO **FD** registered oil such as “MaxLife”, RedMax Synthetic blend Premium 2-stroke oil **WILL VOID THE RedMax TWO-STROKE ENGINE WARRANTY.**

WARNING: Do not use NMMA (National Marine Manufacturers Association), BIA (Boating Industry Association), and TCW (two cycle water cooled) oils designed for MoPeds or Outboard, water cooled Marine Engines. Do not use API (American Petroleum Institute), TC (Two Cycle) labeled oils. The API-TC test standard has been discontinued by API in 1995 and it no longer exists.

IMPORTANT : **Gasoline/Oil mixture Storage Recommendations**

Store your gasoline or gasoline/oil mixture in a cool dry area in a tightly sealed approved container to limit the entry of moisture and additional air (oxygen). Moisture and air cause the development of varnish and gum, making the fuel stale. Stored gasoline and gasoline/oil mixture ages and loses its octane rating and volatility. Do not mix more gasoline/oil than you intend to use in 30 days, and 60 days when fuel stabilizer is added. RedMax Air-Cooled “Max Life” Synthetic blend Premium two-stroke engine oil **“Contains fuel stabilizer”** and will automatically extend your gasoline/oil mixture life up to 60 days.