



**SB, FAN/IMPELLER - LOOSE BOLTS, EBZ8550,  
EBZ8550-RH, EBZ7500, EBZ7500-RH, 2021-11**

**Affected models**

Model	PNC	Serial Range	
		Start	End
EBZ7500	966624301	20203800001	20214000001
EBZ7500-RH	966709901	20203800001	20214000001
EBZ8550	967851601	20203800001	20214000001
EBZ8550-RH	967851501	20203800001	20214000001

**Affected markets**

North America

**Description**

The Impeller for some products could have been assembled with an inefficient amount of torque applied to the impeller bolts and needs to be adjusted. Please take the following precautions:

1. Verify if unit was produced in the serial range provided as per chart above. If not, then no action required.
2. If product was produced within the serial range, then conduct torque check and verify that the torque on the four bolts are in accordance with the specification of the Workshop Manual, worn or damaged impellers or related parts need to be replaced.

**Action**

	Product sold to end user	Residual inventory not yet sold
What is required:	Service is required	Service is required
When to do:	Only if encountered	Inspect inventory
What to do:	Check impeller bolt torque to ensure that all 4 bolts are fully seated and meet torque requirements (9.8-13.7 Nm (87-121 in lbs))	
How to do:	Follow procedure in Workshop Manual.	



**Service Bulletin  
B2210007A-15**

Action required

Information only

**Parts information:** (\*Only replace if warranty is needed)

New part no.	Part description	Quantity	Old part no.
589266101	Fan/Impeller	1	No Change
576561601	Bolt	4	No Change
576592701	Coupler	1	No Change

**Warranty reporting information**

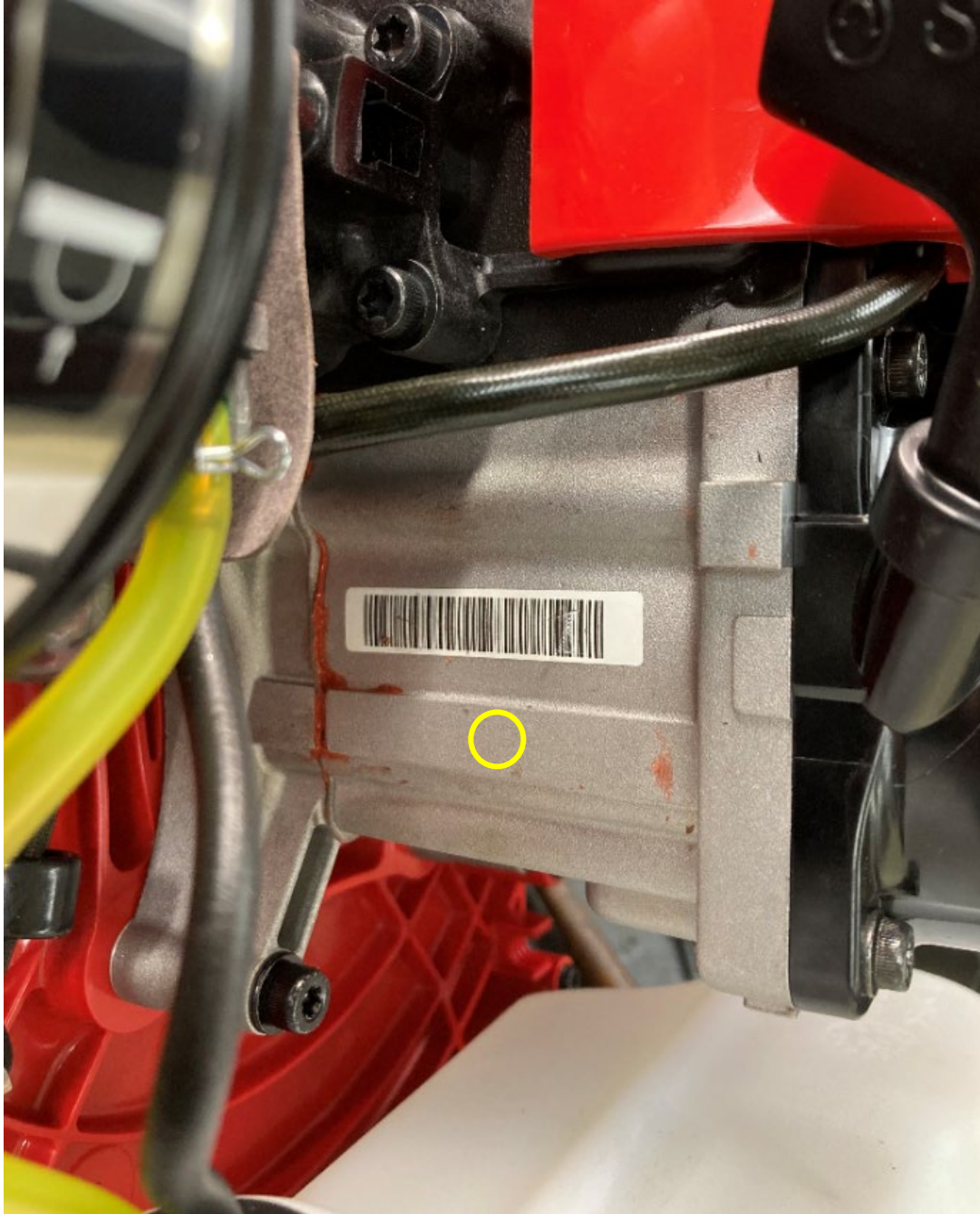
Normal warranty rules apply. A warranty claim must be filed for each unit serviced, even if service is labor only. Please include full serial number. All claims must be sent through our warranty process using only the information listed below:

Field	Selection or Entry
Claim type (inventory)	4 - Requested by Factory
Claim type (end users)	1 - Warranty
Failure description	B2210007A-15
Component code	806 Fan/Impeller
Defect code	19 Loose
Labor allowance	4 units (24 minutes)

**Additional information**

If product is damaged and in need of repair, then normal warranty should apply.

After inspection and/or repair, mark the unit with a spring loaded center punch in the following yellow circled area to indicate that the unit's impeller bolt torques are within the specified design limits.



### Revision History

Rev.	Date	Order id.	Description
A	11/10/21	00015213	Created